

GYPFAST AIR



DESCRIPTION

- Part No.: GYPFASTAIR
- Fully Automatic
- 2-1/2" Pin Capacity
- Length: 12"
- Height: 13"
- Weight: 5.5 lbs.
- Lengths: 1", 1-1/2", 2" and 2-1/2"
- Diameter .140" Nominal
- Head Style 5/16" dia. bugle head
- Finish Climacoat Long Life Polymer

ADVANTAGES

- High performance pneumatic fastening system is 3-5 times faster than screws.
- 150 nails in a coil reduces reloading – improves productivity.
- Collation provides smooth, consistent operation with no flagging or breakage.
- Switch from sequential to bump fire.
- Aggressive, patented nail shank design provides high pullout performance.
- Contoured bugle head style provides high pullover (wind) resistance.
- Long life Climacoat™ finish is 10 times more corrosion resistant than electro-zinc plating.

GYPFAST AIR HD



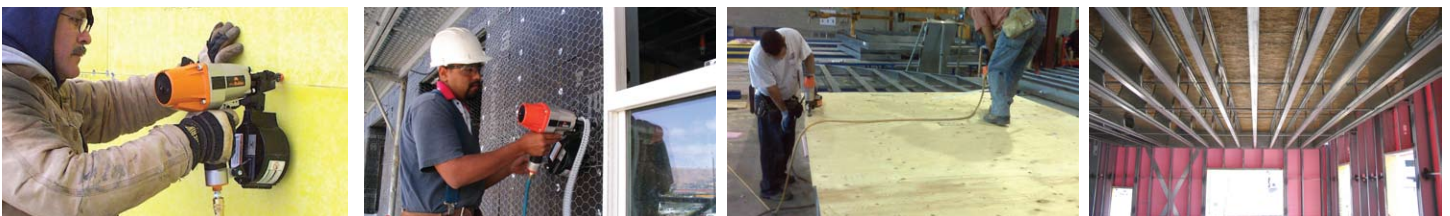
DESCRIPTION

- Part No.: GYPFASTAIRHD
- Fully Automatic
- 2-1/2" Pin Capacity
- Length: 13.5"
- Height: 14.5"
- Weight: 6 lbs
- Lengths: 1", 1-1/2", 2" and 2-1/2"
- Diameter .140" Nominal
- Head Style 5/16" dia. bugle head
- Finish Climacoat Long Life Polymer

ADVANTAGES

- High performance pneumatic fastening system is 3-5 times faster than screws.
- 150 nails in a coil reduces reloading – improves productivity.
- Collation provides smooth, consistent operation with no flagging or breakage.
- Switch from sequential to bump fire.
- Aggressive, patented nail shank design provides high pullout performance.
- Contoured bugle head style provides high pullover (wind) resistance.
- Long life Climacoat™ finish is 10 times more corrosion resistant than electro-zinc plating.

APPLICATIONS



Exterior Gypsum sheathing to steel framing (20-14 gauge), Plywood and OSB sheathing/flooring, Wood furring to steel framing, Fiber cement panels to steel framing, Woven wire mesh or expanded metal lath to steel framing

OSB and plywood to iSPAN joists